

**BID TABULATION FOR:**

CONSTRUCTION OF THE WATER, SANITARY SEWER, AND DRAINAGE FACILITIES  
TO SERVE OLYMPIA FIELDS SECTION 2  
FORT BEND COUNTY MUNICIPAL UTILITY DISTRICT NO. 24  
CITY OF HOUSTON E.T.J., FORT BEND COUNTY, TEXAS  
DECEMBER 10, 2024  
LJA ENGINEERING, INC.  
A. GUIJOSA  
NOVEMBER 10, 2024  
1037-9102 (9.2)

**BID OPENING DATE:**

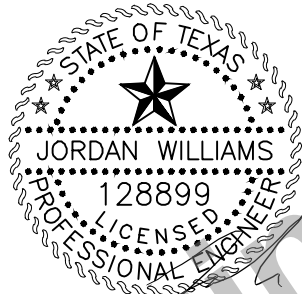
**BID OPENING LOCATION:**

**TABULATION BY:**

**TABULATION DATE:**

**LJA JOB NO.**

BIDDER NAME	BASE BID	PROPOSED DURATION (DAYS)
1) BLAZEY CONSTRUCTION SERVICES LLC	\$1,369,750.89	50 \ 65
2) FELLERS AND CLARK LP	\$1,521,000.00	20 \ 30
3) DIMAS BROS. CONSTRUCTION	\$1,607,000.00	45 \ 55
4) CROSTEX CONSTRUCTION INC.	\$1,670,000.00	60 \ 75



12/11/2024

I, Jordan Williams, PE, hereby certify these bid tabulations to be true and correct.

LJA Engineering, Inc.

**BID TABULATION FOR:**

**CONSTRUCTION OF THE WATER, SANITARY SEWER, AND DRAINAGE FACILITIES  
 TO SERVE OLYMPIA FIELDS SECTION 2  
 FORT BEND COUNTY MUNICIPAL UTILITY DISTRICT NO. 24  
 CITY OF HOUSTON E.T.J., FORT BEND COUNTY, TEXAS  
 DECEMBER 10, 2024  
 LJA ENGINEERING, INC.  
 A. GUIJOSA  
 NOVEMBER 10, 2024  
 1037-9102 (9.2)**

**BID OPENING DATE:  
 BID OPENING LOCATION:  
 TABULATION BY:  
 TABULATION DATE:  
 LJA JOB NO.**

NO.	ITEM DESCRIPTION	UNIT	QTY	1) BLAZEY CONSTRUCTION SERVICES LLC		2) FELLERS AND CLARK LP		3) DIMAS BROS. CONSTRUCTION		4) CROSTEX CONSTRUCTION INC.	
				UNIT COST	TOTAL	UNIT COST	TOTAL	UNIT COST	TOTAL	UNIT COST	TOTAL
<b>WATER ITEMS</b>											
1.	1" PVC WATER SERVICE PIPE, INCLUDES ALL FITTINGS AND VALVES, COMPLETE IN PLACE	LF	71	\$10.00	\$710.00	\$44.95	\$3,191.45	\$20.00	\$1,420.00	\$20.00	\$1,420.00
2.	8" PVC WATER PIPE, AWWA C-900, DR 18, CLASS 235, INCLUDES ALL FITTINGS AND VALVES, COMPLETE IN PLACE	LF	1690	\$37.00	\$62,530.00	\$42.15	\$71,233.50	\$44.00	\$74,360.00	\$35.00	\$59,150.00
3.	8" PVC RESTRAINED JOINT WATER PIPE, AWWA C-900, DR 18, CLASS 305, ALL DEPTHS, INCLUDES ALL FITTINGS AND VALVES AND BEDDING AND BACKFILL, COMPLETE IN PLACE	LF	476	\$45.00	\$21,420.00	\$45.30	\$21,562.80	\$48.00	\$22,848.00	\$41.00	\$19,516.00
4.	TRENCHLESS CONSTRUCTION OF 8" PVC WATERLINE C900, DR14, CLASS 305, INCLUDES PIPES, FITTING VALVES, BORE PITS BEDDING AND BACKFILL, ALL DEPTHS, COMPLETE IN PLACE	LF	65	\$139.00	\$9,035.00	\$86.45	\$5,619.25	\$150.00	\$9,750.00	\$250.00	\$16,250.00
5.	8" PLUG AND CLAMP WITH 2" BLOW-OFF VALVE & BOX ASSEMBLY, COMPLETE IN PLACE	EA	3	\$1,718.00	\$5,154.00	\$918.50	\$2,755.50	\$884.00	\$2,652.00	\$1,480.00	\$4,440.00
6.	WET CONNECTION OF PROPOSED 8" WATER LINE TO EXISTING 8" WATER LINE, INCLUDES FITTINGS, ALL ADAPTERS AND CONNECTORS NECESSARY, INCLUDES REMOVAL AND DISPOSAL OF EXISTING PLUG & CLAMP AND 2" BLOW OFF VALVE AND BOX (ALL DEPTHS), COMPLETE IN PLACE	EA	1	\$1,048.00	\$1,048.00	\$182.50	\$182.50	\$784.00	\$784.00	\$1,500.00	\$1,500.00
7.	8" AWWA GATE VALVE AND BOX, COMPLETE IN PLACE	EA	8	\$1,958.00	\$15,664.00	\$2,049.85	\$16,398.80	\$1,584.00	\$12,672.00	\$1,670.00	\$13,360.00
8.	FLUSHING VALVE UNIT, ALL DEPTHS, INCLUDES APPROPRIATE TEE, 6" GATE VALVE & BOX, LEAD, AND FLUSHING VALVE, COMPLETE IN PLACE	EA	5	\$6,036.00	\$30,180.00	\$5,892.90	\$29,464.50	\$5,784.00	\$28,920.00	\$7,200.00	\$36,000.00
9.	TRENCH SAFETY, ALL DEPTHS, ALL SIZES, COMPLETE IN PLACE	LF	2237	\$0.30	\$671.10	\$0.10	\$223.70	\$1.00	\$2,237.00	\$1.05	\$2,348.85
10.	UTILITY SPOIL TO BE HAULED, SPREAD AND COMPACTED TO 95% STANDARD PROCTOR DENSITY (WITHIN PROJECT LIMITS), COMPLETE IN PLACE	CY	627	\$1.80	\$1,128.60	\$3.05	\$1,912.35	\$3.00	\$1,881.00	\$4.00	\$2,508.00
11.	EXTRA DUCTILE IRON FITTINGS (TO BE USED ONLY AT THE WRITTEN DIRECTION OF THE ENGINEER), COMPLETE IN PLACE	TON	2	\$3,330.00	\$6,660.00	\$1,000.00	\$2,000.00	\$1,000.00	\$2,000.00	\$1,000.00	\$2,000.00
<b>SUBTOTAL WATER ITEMS</b>					<b>\$154,200.70</b>		<b>\$154,544.35</b>		<b>\$159,524.00</b>		<b>\$158,492.85</b>
<b>SANITARY SEWER SYSTEM ITEMS</b>											
1.	8" PVC SEWER PIPE, ASTM D-3034, SDR 26, 0-8 FOOT CUT, WITH STANDARD BEDDING AND BACKFILL, COMPLETE IN PLACE	LF	964	\$41.00	\$39,524.00	\$45.85	\$44,199.40	\$48.00	\$46,272.00	\$38.00	\$36,632.00
2.	8" PVC SEWER PIPE, ASTM D-3034, SDR 26, 8-12 FOOT CUT, WITH STANDARD BEDDING AND BACKFILL, COMPLETE IN PLACE	LF	142	\$44.00	\$6,248.00	\$45.85	\$6,510.70	\$48.00	\$6,816.00	\$41.00	\$5,822.00
3.	8" PVC SEWER PIPE, ASTM D-3034, SDR 26, 12-16 FOOT CUT, WITH STANDARD BEDDING AND BACKFILL, COMPLETE IN PLACE	LF	120	\$51.00	\$6,120.00	\$45.85	\$5,502.00	\$48.00	\$5,760.00	\$46.00	\$5,520.00
4.	8" PVC SEWER PIPE, ASTM D-3034, SDR 26, 16-20 FOOT CUT, WITH STANDARD BEDDING AND BACKFILL, COMPLETE IN PLACE	LF	726	\$71.00	\$51,546.00	\$45.85	\$33,287.10	\$58.00	\$42,108.00	\$54.00	\$39,204.00
5.	TRENCHLESS CONSTRUCTION OF 8" PVC SEWER PIPE, ASTM D-3034, SDR 26, 8-12 FOOT CUT, INCLUDES PIPES, BORE PITS, BEDDING & BACKFILL, COMPLETE IN PLACE	LF	65	\$105.00	\$6,825.00	\$95.00	\$6,175.00	\$150.00	\$9,750.00	\$250.00	\$16,250.00

**BID TABULATION FOR:**

**CONSTRUCTION OF THE WATER, SANITARY SEWER, AND DRAINAGE FACILITIES  
 TO SERVE OLYMPIA FIELDS SECTION 2  
 FORT BEND COUNTY MUNICIPAL UTILITY DISTRICT NO. 24  
 CITY OF HOUSTON E.T.J., FORT BEND COUNTY, TEXAS  
 DECEMBER 10, 2024  
 LJA ENGINEERING, INC.  
 A. GUIJOSA  
 NOVEMBER 10, 2024  
 1037-9102 (9.2)**

**BID OPENING DATE:  
 BID OPENING LOCATION:  
 TABULATION BY:  
 TABULATION DATE:  
 LJA JOB NO.**

NO.	ITEM DESCRIPTION	UNIT	QTY	1) BLAZEY CONSTRUCTION SERVICES LLC		2) FELLERS AND CLARK LP		3) DIMAS BROS. CONSTRUCTION		4) CROSTEX CONSTRUCTION INC.	
				UNIT COST	TOTAL	UNIT COST	TOTAL	UNIT COST	TOTAL	UNIT COST	TOTAL
6.	4" PVC FORCE MAIN, AWWA C-900, DR 18, ALL DEPTHS, INCLUDES FITTINGS, BEDDING AND BACKFILL, AND ALL OTHER APPURTENANCES, COMPLETE IN PLACE	LF	350	\$24.00	\$8,400.00	\$29.55	\$10,342.50	\$28.55	\$9,992.50	\$38.00	\$13,300.00
7.	STANDARD SANITARY SEWER MANHOLE (0'-8' DEPTH), INCLUDING INFLOW PROTECTOR, COMPLETE IN PLACE	EA	8	\$3,102.00	\$24,816.00	\$2,629.05	\$21,032.40	\$7,884.00	\$63,072.00	\$3,600.00	\$28,800.00
8.	CORROSION RESISTANT PRECAST MANHOLE FOR FORCEMAIN DISCHARGE (0'-8'), INCLUDES STAINLESS STEEL INFLOW PROTECTOR AND ADJUSTMENTS, COMPLETE IN PLACE	EA	1	\$6,240.00	\$6,240.00	\$6,812.60	\$6,812.60	\$7,884.00	\$7,884.00	\$17,000.00	\$17,000.00
9.	EXTRA DEPTH ON SANITARY SEWER MANHOLE (OVER 8' DEPTH), COMPLETE IN PLACE	VF	51.01	\$159.00	\$8,110.59	\$139.90	\$7,136.30	\$140.00	\$7,141.40	\$310.00	\$15,813.10
10.	CORE INTO EXISTING SANITARY SEWER MANHOLE AND CONNECT PROPOSED 8" SANITARY SEWER TO EXISTING SANITARY SEWER SYSTEM, COMPLETE IN PLACE	EA	1	\$2,604.00	\$2,604.00	\$2,250.60	\$2,250.60	\$1,800.00	\$1,800.00	\$3,500.00	\$3,500.00
11.	8" SANITARY SEWER PLUG, ALL DEPTHS, COMPLETE IN PLACE	EA	2	\$122.00	\$244.00	\$73.00	\$146.00	\$184.00	\$368.00	\$100.00	\$200.00
12.	STANDARD SANITARY DROP STRUCTURE, ALL SIZES, ALL DEPTHS, COMPLETE IN PLACE	EA	1	\$780.00	\$780.00	\$882.00	\$882.00	\$784.00	\$784.00	\$1,750.00	\$1,750.00
13.	"SHORT SIDE" DOUBLE OR SINGLE 6" PVC PIPE SERVICE LEADS, ASTM D-2241, SDR 26, (ALL DEPTHS), INCLUDING CEMENT STABILIZED SAND BACKFILL, RISER, STACK, WYE, PLUG, MARKER, AND ANY NECESSARY FITTINGS, ETC., COMPLETE IN PLACE	EA	19	\$1,776.00	\$33,744.00	\$1,063.85	\$20,213.15	\$1,550.00	\$29,450.00	\$1,360.00	\$25,840.00
14.	"FAR SIDE" DOUBLE OR SINGLE 6" PVC PIPE SERVICE LEADS, ASTM D-2241, SDR 26, (ALL DEPTHS), ALL LENGTHS INCLUDING CEMENT STABILIZED SAND BACKFILL, RISER, STACK, WYE, PLUG, MARKER, AND ANY NECESSARY FITTINGS, ETC., COMPLETE IN PLACE	EA	14	\$3,664.00	\$51,296.00	\$2,927.50	\$40,985.00	\$3,884.00	\$54,376.00	\$2,825.00	\$39,550.00
15.	TRENCH SAFETY SYSTEM, ALL DEPTHS, ALL SIZES, COMPLETE IN PLACE	LF	2851	\$0.30	\$855.30	\$0.10	\$285.10	\$1.00	\$2,851.00	\$1.10	\$3,136.10
16.	UTILITY SPOIL TO BE HAULED, SPREAD, AND COMPACTED TO 95% STANDARD PROCTOR DENSITY (WITHIN PROJECT LIMITS), COMPLETE IN PLACE	CY	650	\$1.80	\$1,170.00	\$3.05	\$1,982.50	\$3.00	\$1,950.00	\$4.00	\$2,600.00
17.	ADDITIONAL COST FOR WATER AND SANITARY SEWER CROSSINGS, ALL DEPTHS INCLUDES UPGRADE TO 18' SECTION FOR RESTRAINED JOINT AWWA C900 DR 18 PIPE FOR BOTH WATER AND SANITARY SEWER LINES WHERE APPLICABLE AND RESTRAINED JOINT FITTINGS, COMPLETE IN PLACE	EA	3	\$1,483.00	\$4,449.00	\$90.00	\$270.00	\$100.00	\$300.00	\$500.00	\$1,500.00
18.	ADDITIONAL COST FOR SANITARY SEWER BEDDING AND BACKFILL FOR UNSATISFACTORY SOIL CONDITIONS (TO BE USED ONLY AT THE WRITTEN DIRECTION OF THE ENGINEER), COMPLETE IN PLACE	LF	575	\$15.00	\$8,625.00	\$15.00	\$8,625.00	\$15.00	\$8,625.00	\$15.00	\$8,625.00
19.	DEWATERING, (TO BE USED ONLY AT THE WRITTEN DIRECTION OF THE ENGINEER), COMPLETE IN PLACE	LF	575	\$27.00	\$15,525.00	\$25.00	\$14,375.00	\$25.00	\$14,375.00	\$25.00	\$14,375.00
20.	EXTRA CEMENT STABILIZED SAND, (TO BE USED ONLY AT THE WRITTEN DIRECTION OF THE ENGINEER), COMPLETE IN PLACE	CY	100	\$30.00	\$3,000.00	\$20.00	\$2,000.00	\$20.00	\$2,000.00	\$20.00	\$2,000.00
<b>SUBTOTAL SANITARY SEWER SYSTEM ITEMS</b>					<b>\$280,121.89</b>		<b>\$233,012.35</b>		<b>\$315,674.90</b>		<b>\$281,417.20</b>

**STORM SEWER SYSTEM ITEMS**

1.	24" RCP STORM SEWER, ASTM C-76, CLASS III, COMPLETE IN PLACE	LF	550	\$73.00	\$40,150.00	\$99.20	\$54,560.00	\$101.00	\$55,550.00	\$82.00	\$45,100.00
----	--	----	-----	---------	-------------	---------	-------------	----------	-------------	---------	-------------

**BID TABULATION FOR:**

**CONSTRUCTION OF THE WATER, SANITARY SEWER, AND DRAINAGE FACILITIES  
TO SERVE OLYMPIA FIELDS SECTION 2  
FORT BEND COUNTY MUNICIPAL UTILITY DISTRICT NO. 24  
CITY OF HOUSTON E.T.J., FORT BEND COUNTY, TEXAS  
DECEMBER 10, 2024  
LJA ENGINEERING, INC.  
A. GUIJOSA  
NOVEMBER 10, 2024  
1037-9102 (9.2)**

**BID OPENING DATE:  
BID OPENING LOCATION:  
TABULATION BY:  
TABULATION DATE:  
LJA JOB NO.**

NO.	ITEM DESCRIPTION	UNIT	QTY	1) BLAZEY CONSTRUCTION SERVICES LLC		2) FELLERS AND CLARK LP		3) DIMAS BROS. CONSTRUCTION		4) CROSTEX CONSTRUCTION INC.	
				UNIT COST	TOTAL	UNIT COST	TOTAL	UNIT COST	TOTAL	UNIT COST	TOTAL
2.	30" RCP STORM SEWER, ASTM C-76, CLASS III, COMPLETE IN PLACE	LF	401	\$89.00	\$35,689.00	\$115.35	\$46,255.35	\$118.00	\$47,318.00	\$103.00	\$41,303.00
3.	36" RCP STORM SEWER, ASTM C-76 CLASS III, COMPLETE IN PLACE	LF	169	\$123.00	\$20,787.00	\$159.45	\$26,947.05	\$169.00	\$28,561.00	\$142.00	\$23,998.00
4.	42" RCP STORM SEWER, ASTM C-76 CLASS III, COMPLETE IN PLACE	LF	354	\$164.00	\$58,056.00	\$205.90	\$72,888.60	\$208.00	\$73,632.00	\$188.00	\$66,552.00
5.	48" RCP STORM SEWER, ASTM C-76 CLASS III, COMPLETE IN PLACE	LF	863	\$197.00	\$170,011.00	\$241.10	\$208,069.30	\$235.00	\$202,805.00	\$230.00	\$198,490.00
6.	60" RCP STORM SEWER, ASTM C-76 CLASS III, COMPLETE IN PLACE	LF	244	\$336.00	\$81,984.00	\$407.60	\$99,454.40	\$408.00	\$99,552.00	\$400.00	\$97,600.00
7.	5X5 REINFORCED BOX CULVERT, ATSM C-76 CLASS III, COMPLETE IN PLACE	LF	188	\$461.00	\$86,668.00	\$564.35	\$106,097.80	\$520.00	\$97,760.00	\$585.00	\$109,980.00
8.	6'X5' REINFORCED BOX CULVERT, ASTM C-76 CLASS III, COMPLETE IN PLACE	LF	147	\$555.00	\$81,585.00	\$693.55	\$101,951.85	\$684.00	\$100,548.00	\$700.00	\$102,900.00
9.	TYPE "C" PRECAST OR CAST-IN PLACE MANHOLE FOR 42" STORM SEWERS AND SMALLER, ALL DEPTHS, COMPLETE IN PLACE	EA	7	\$3,883.00	\$27,181.00	\$3,227.05	\$22,589.35	\$4,884.00	\$34,188.00	\$3,700.00	\$25,900.00
10.	TYPE "C" PRECAST OR CAST-IN-PLACE MANHOLE FOR 48" STORM SEWERS AND LARGER, ALL DEPTHS, COMPLETE IN PLACE	EA	9	\$5,979.00	\$53,811.00	\$3,936.70	\$35,430.30	\$6,284.00	\$56,556.00	\$9,400.00	\$84,600.00
11.	TYPE "C" PRECAST OR CAST-IN-PLACE MANHOLE FOR 42" STORM SEWERS AND SMALLER WITH AN "E" INLET TOP, ALL DEPTHS, COMPLETE IN PLACE	EA	1	\$5,994.00	\$5,994.00	\$5,335.75	\$5,335.75	\$5,000.00	\$5,000.00	\$5,500.00	\$5,500.00
12.	REINFORCED CONCRETE STORM SEWER JUNCTION BOX WITH REINFORCED CONCRETE TYPE "C" MANHOLE TOP, INCLUDES ADJUSTMENTS, ALL DEPTHS, COMPLETE IN PLACE	EA	4	\$15,946.00	\$63,784.00	\$17,949.10	\$71,796.40	\$29,155.00	\$116,620.00	\$25,000.00	\$100,000.00
13.	STAGE I- STANDARD TYPE "C" INLET, ALL DEPTHS, INCLUDES TEMPORARY SILT BARRIER FENCE FOR STAGE 1 INLETS, COMPLETE IN PLACE	EA	20	\$1,520.00	\$30,400.00	\$1,137.45	\$22,749.00	\$1,184.00	\$23,680.00	\$3,000.00	\$60,000.00
14.	STAGE II - STANDARD (TYPE "C") INLET, COMPLETE IN PLACE	EA	20	\$1,641.00	\$32,820.00	\$2,530.40	\$50,608.00	\$1,730.00	\$34,600.00	\$1,000.00	\$20,000.00
15.	REINFORCED CONCRETE TYPE "E" INLET ALL SIDES OPEN, ALL DEPTHS, COMPLETE IN PLACE	EA	1	\$3,345.00	\$3,345.00	\$4,136.25	\$4,136.25	\$2,884.00	\$2,884.00	\$7,000.00	\$7,000.00
16.	TRENCH SAFETY SYSTEM, ALL DEPTHS, ALL SIZES, COMPLETE IN PLACE	LF	2916	\$0.30	\$874.80	\$0.10	\$291.60	\$1.00	\$2,916.00	\$1.05	\$3,061.80
17.	4- INCH THICK SLOPE PAVING, (INCLUDES FILTER FABRIC, WEEP HOLES, TOE WALLS, RE-BAR, AND EXPANSION JOINTS), COMPLETE IN PLACE	SY	57	\$137.00	\$7,809.00	\$182.50	\$10,402.50	\$98.00	\$5,586.00	\$125.00	\$7,125.00
18.	STORAGE EXCAVATION, HAULING, PLACEMENT & COMPACTION OF CHANNEL EXPANSION, INCLUDES FILLING TO ELVATIONS SPECIFIED IN THE GRADING PLAN, COMPLETE IN PLACE	CY	4758	\$5.15	\$24,503.70	\$12.85	\$61,140.30	\$8.00	\$38,064.00	\$18.00	\$85,644.00
19.	ADDITIONAL COST FOR STORM SEWER BEDDING AND BACKFILL FOR UNTASIFCATORY SOIL CONDITIONS (TO BE USED ONLY AT THE WRITTEN DIRECTION OF THE ENGINEER), COMPLETE IN PLACE	LF	582	\$17.00	\$9,894.00	\$1.00	\$582.00	\$1.00	\$582.00	\$15.00	\$8,730.00
20.	DEWATERING, (TO BE USED ONLY AT THE WRITTEN DIRECTION OF THE ENGINEER), COMPLETE IN PLACE	LF	582	\$27.00	\$15,714.00	\$25.00	\$14,550.00	\$25.00	\$14,550.00	\$25.00	\$14,550.00
21.	EXTRA CEMENT STABILIZED SAND, (TO BE USED ONLY AT THE WRITTEN DIRECTION OF THE ENGINEER), COMPLETE IN PLACE	CY	100	\$30.00	\$3,000.00	\$20.00	\$2,000.00	\$20.00	\$2,000.00	\$20.00	\$2,000.00
22.	UTILITY SPOIL TO BE HAULED, SPREAD, AND COMPACTED TO 95% STANDARD PROCTOR DENSITY (WITHIN PROJECT LIMITS), COMPLETE IN PLACE	CY	5725	\$1.80	\$10,305.00	\$3.05	\$17,461.25	\$3.00	\$17,175.00	\$4.00	\$22,900.00

**BID TABULATION FOR:**

**CONSTRUCTION OF THE WATER, SANITARY SEWER, AND DRAINAGE FACILITIES  
 TO SERVE OLYMPIA FIELDS SECTION 2  
 FORT BEND COUNTY MUNICIPAL UTILITY DISTRICT NO. 24  
 CITY OF HOUSTON E.T.J., FORT BEND COUNTY, TEXAS  
 DECEMBER 10, 2024  
 LJA ENGINEERING, INC.  
 A. GUIJOSA  
 NOVEMBER 10, 2024  
 1037-9102 (9.2)**

**BID OPENING DATE:  
 BID OPENING LOCATION:  
 TABULATION BY:  
 TABULATION DATE:  
 LJA JOB NO.**

NO.	ITEM DESCRIPTION	UNIT	QTY	1) BLAZEY CONSTRUCTION SERVICES LLC		2) FELLERS AND CLARK LP		3) DIMAS BROS. CONSTRUCTION		4) CROSTEX CONSTRUCTION INC.	
				UNIT COST	TOTAL	UNIT COST	TOTAL	UNIT COST	TOTAL	UNIT COST	TOTAL
23.	8" BRICK PLUG FOR STORM SEWER, ALL SIZES, ALL DEPTHS, COMPLETE IN PLACE	EA	3	\$85.00	\$255.00	\$699.50	\$2,098.50	\$184.00	\$552.00	\$250.00	\$750.00
24.	V-BOTTOM DRAINAGE SWALE, COMPLETE IN PLACE	LF	1270	\$4.00	\$5,080.00	\$9.85	\$12,509.50	\$4.00	\$5,080.00	\$4.00	\$5,080.00
25.	OVERFLOW DRAINAGE SWALE, COMPLETE IN PLACE	LF	288	\$4.00	\$1,152.00	\$27.30	\$7,862.40	\$20.00	\$5,760.00	\$6.00	\$1,728.00
26.	2" CLAY LINER TO BE USED WHERE UNSUITABLE SOILS OCCUR DURING EXCAVATION, (AS DIRECTED BY THE GEOTECHNICAL ENGINEER), INCLUDES EXTRA EXCAVATION, HAULING, PLACEMENT AND COMPACTION, COMPLETE IN PLACE	SY	1433	\$9.10	\$13,040.30	\$14.65	\$20,993.45	\$6.00	\$8,598.00	\$18.00	\$25,794.00
27.	SURFACE WATER CONTROL, INCLUDES PUMPING REQUIRED TO CONSTRUCT PROPOSED POND EXPANSION, (AS DIRECTED BY ENGINEER), COMPLETE IN PLACE	LS	1	\$6,258.00	\$6,258.00	\$3,937.50	\$3,937.50	\$10,000.00	\$10,000.00	\$2,500.00	\$2,500.00
28.	CONSTRUCTION AND REMOVAL OF TEMPORARY COFFER DAM FOR THE CONSTRUCTION OF STORM SEWER OUTFALL, INCLUDES DEWATERING AND ALL APPURTENANCES, (AS DIRECTED BY ENGINEER), ALL SIZES, ALL DEPTHS, COMPLETE IN PLACE	EA	1	\$7,396.00	\$7,396.00	\$13,387.50	\$13,387.50	\$6,778.60	\$6,778.60	\$6,500.00	\$6,500.00
<b>SUBTOTAL STORM SEWER SYSTEM ITEMS</b>					<b>\$897,546.80</b>		<b>\$1,096,085.90</b>		<b>\$1,096,895.60</b>		<b>\$1,175,285.80</b>
<b>MISCELLANEOUS ITEMS</b>											
1.	STORMWATER POLLUTION PREVENTION PLAN COMPLIANCE, INSPECTIONS, MAINTENANCE OF ENTRANCE AND FENCE NOI, NOT AND ALL OTHER ITEMS NOT SPECIFICALLY LISTED ABOVE, COMPLETE IN PLACE	LS	1	\$1,565.00	\$1,565.00	\$2,105.25	\$2,105.25	\$500.00	\$500.00	\$1,223.65	\$1,223.65
2.	STABILIZED CONSTRUCTION EXIT AT LOCATIONS SHOWN ON PLANS (TO BE USED ONLY AT THE WRITTEN DIRECTION OF THE ENGINEER), TO INCLUDE INSTALLATION, MAINTENANCE AND REMOVAL, COMPLETE IN PLACE	EA	1	\$1,800.00	\$1,800.00	\$1,200.00	\$1,200.00	\$1,200.00	\$1,200.00	\$1,200.00	\$1,200.00
3.	CONCRETE TRUCK WASHOUT PIT, TO INCLUDE INSTALLATION, MAINTENANCE AND REMOVAL, (TO BE USED ONLY AT THE WRITTEN DIRECTION OF THE ENGINEER), COMPLETE IN PLACE	EA	1	\$597.00	\$597.00	\$121.65	\$121.65	\$500.00	\$500.00	\$1,000.00	\$1,000.00
4.	INSTALL AND MAINTAIN FILTER FABRIC FENCE (TO BE USED AT WRITTEN DIRECTION OF THE ENGINEER), COMPLETE IN PLACE	LF	3573	\$2.00	\$7,146.00	\$1.00	\$3,573.00	\$1.00	\$3,573.00	\$1.00	\$3,573.00
5.	INSTALL AND MAINTAIN REINFORCED FILTER FABRIC FENCE (TO BE USED AT THE WRITTEN DIRECTION OF THE ENGINEER), COMPLETE IN PLACE	LF	3510	\$1.25	\$4,387.50	\$1.25	\$4,387.50	\$1.25	\$4,387.50	\$1.25	\$4,387.50
6.	BROADCAST SEEDING TO INCLUDE FERTILIZING AND WATER (TO BE USED AT THE DIRECTION OF THE ENGINEER), COMPLETE IN PLACE	AC	10	\$800.00	\$8,000.00	\$600.00	\$6,000.00	\$600.00	\$6,000.00	\$600.00	\$6,000.00
7.	HYDROMULCH SEEDING TO INCLUDE FERTILIZING AND WATERING, FROM BACK OF CURB TO EDGE OF RIGHT-OF-WAY, PROPOSED SWALES, AND TRANSITION FILL FROM BACK OF LOTS TO NATRURAL GROUND, TO BE USED AT THE DIRECTION OF THE ENGINEER, COMPLETE IN PLACE	AC	3	\$1,700.00	\$5,100.00	\$1,200.00	\$3,600.00	\$2,800.00	\$8,400.00	\$1,200.00	\$3,600.00
8.	STAGE II INLET PROTECTION BARRIERS, COMPLETE IN PLACE	EA	22	\$60.00	\$1,320.00	\$60.00	\$1,320.00	\$60.00	\$1,320.00	\$60.00	\$1,320.00
9.	WOOD MATS AT LOCATIONS WHERE CONTRACTOR CROSSES EXISTING PIPELINES (TO BE USED ONLY AT THE DIRECTION OF THE ENGINEER), AS REQUIRED BY EXISTING PIPELINE ENTITY, INCLUDING REMOVAL AND REDRESSING OF AREA UPON COMPLETION, COMPLETE IN PLACE	EA	1	\$3,983.00	\$3,983.00	\$6,000.00	\$6,000.00	\$3,000.00	\$3,000.00	\$15,000.00	\$15,000.00

**BID TABULATION FOR:**

**CONSTRUCTION OF THE WATER, SANITARY SEWER, AND DRAINAGE FACILITIES  
 TO SERVE OLYMPIA FIELDS SECTION 2  
 FORT BEND COUNTY MUNICIPAL UTILITY DISTRICT NO. 24  
 CITY OF HOUSTON E.T.J., FORT BEND COUNTY, TEXAS  
 DECEMBER 10, 2024  
 LJA ENGINEERING, INC.  
 A. GUIJOSA  
 NOVEMBER 10, 2024  
 1037-9102 (9.2)**

**BID OPENING DATE:  
 BID OPENING LOCATION:  
 TABULATION BY:  
 TABULATION DATE:  
 LJA JOB NO.**

NO.	ITEM DESCRIPTION	UNIT	QTY	1) BLAZEY CONSTRUCTION SERVICES LLC		2) FELLERS AND CLARK LP		3) DIMAS BROS. CONSTRUCTION		4) CROSTEX CONSTRUCTION INC.	
				UNIT COST	TOTAL	UNIT COST	TOTAL	UNIT COST	TOTAL	UNIT COST	TOTAL
10.	AIR BRIDGE AT LOCATIONS WHERE CONTRACTOR CROSSES EXISTING PIPELINES (TO BE USED ONLY AT THE DIRECTION OF THE ENGINEER), AS REQUIRED BY EXISTING PIPELINE ENTITY, INCLUDED REMOVAL AND REDRESSING OF AREA UPON COMPLETION, COMPLETE IN PLACE	EA	1	\$3,983.00	\$3,983.00	\$9,050.00	\$9,050.00	\$6,025.00	\$6,025.00	\$17,500.00	\$17,500.00
<b>SUBTOTAL MISCELLANEOUS ITEMS</b>					<b>\$37,881.50</b>		<b>\$37,357.40</b>		<b>\$34,905.50</b>		<b>\$54,804.15</b>
<b>BID SUMMARY</b>											
WATER ITEMS					\$154,200.70		\$154,544.35		\$159,524.00		\$158,492.85
SANITARY SEWER SYSTEM ITEMS					\$280,121.89		\$233,012.35		\$315,674.90		\$281,417.20
STORM SEWER SYSTEM ITEMS					\$897,546.80		\$1,096,085.90		\$1,096,895.60		\$1,175,285.80
MISCELLANEOUS ITEMS					\$37,881.50		\$37,357.40		\$34,905.50		\$54,804.15
<b>TOTAL AMOUNT BASE BID</b>					<b>\$1,369,750.89</b>		<b>\$1,521,000.00</b>		<b>\$1,607,000.00</b>		<b>\$1,670,000.00</b>

LJA Engineering, Inc.